

Printer applicator systems **Automatic Labelling**

Versatile, fast, economical





Contents

Industry Solutions	02 – 03	Customised Systems	06 – 07	Made in Germany	10
Modular concepts	04 – 05	Labelling Options	08 – 09	Labels & TT Ribbons	11

The ideal solution for every industry

Container labelling, carton labelling, pallet labelling, bespoke labelling – the demands are increasingly varied. EU 178, EU 135, label standardization to GS1 specification – these are some of the many regulatory requirements we face. Product traceability, quality assurance, “tracking and tracing” in logistics or individual product labelling for just-in-time production: The application of variable label data to match the current product is essential to modern production.

This is the current focus for food manufacturing, for logistics, metal and wood processing, pharmaceutical, chemistry and many other sectors. Weber Packaging Solutions has successfully developed and implemented solutions to labelling and coding for many well-known brands and companies worldwide. We have acquired enormous product and industry experience since 1932 from which you too can benefit.



Industry: Beverages
Application: Labelling of containers



Industry: Logistics
Application: Carton labelling



Industry: Wood processing industry
Application: Product marking



Industry: Pharmaceuticals
Application: Labelling of medical packaging



Industry: Laboratory / Healthcare
Application: Vial / Bottle Labelling



Industry: Foodstuffs
Application: Labelling of pasta



Industry: Chemical
Application: Hazardous Substances Labelling



Industry: Engineering
Application: Labelling of Steel



Industry: Retail / Distribution
Application: Pallet labelling to GS1 Standard



Industry: Automotive
Application: Tyre labelling



Modular concept maximizes flexibility

Weber – multiple applications and future proof

The modular design of our systems is a core consideration in our development of label printers and dispensers. Using the modular system comprising a print module, label winder and unwinder, controller and a wide range of label applicators, virtually all demands for labelling may be catered for. Weber Packaging Solutions modular concept for label printing and dispensing systems offers up to 1 500 different combinations to meet your specific requirements

Dispensing head

Quick-change dispensing heads allow label sizes ranging from small labels up to DIN A5 EAN128 shipping labels to be labelled. The quick-change option allows you to change the format in a matter of seconds. Spring-loaded dispensing heads adapt to uneven surfaces on the product, ensuring that the labels are perfectly applied, for each label application.

Print Engines

The various print engines available offer optimum adaptation to the application and therefore the required capabilities for the specific printing applications (e.g. types of barcodes available), communications capabilities (interfaces and protocols) print head solutions, utilization of optimum printing width and processing speed.

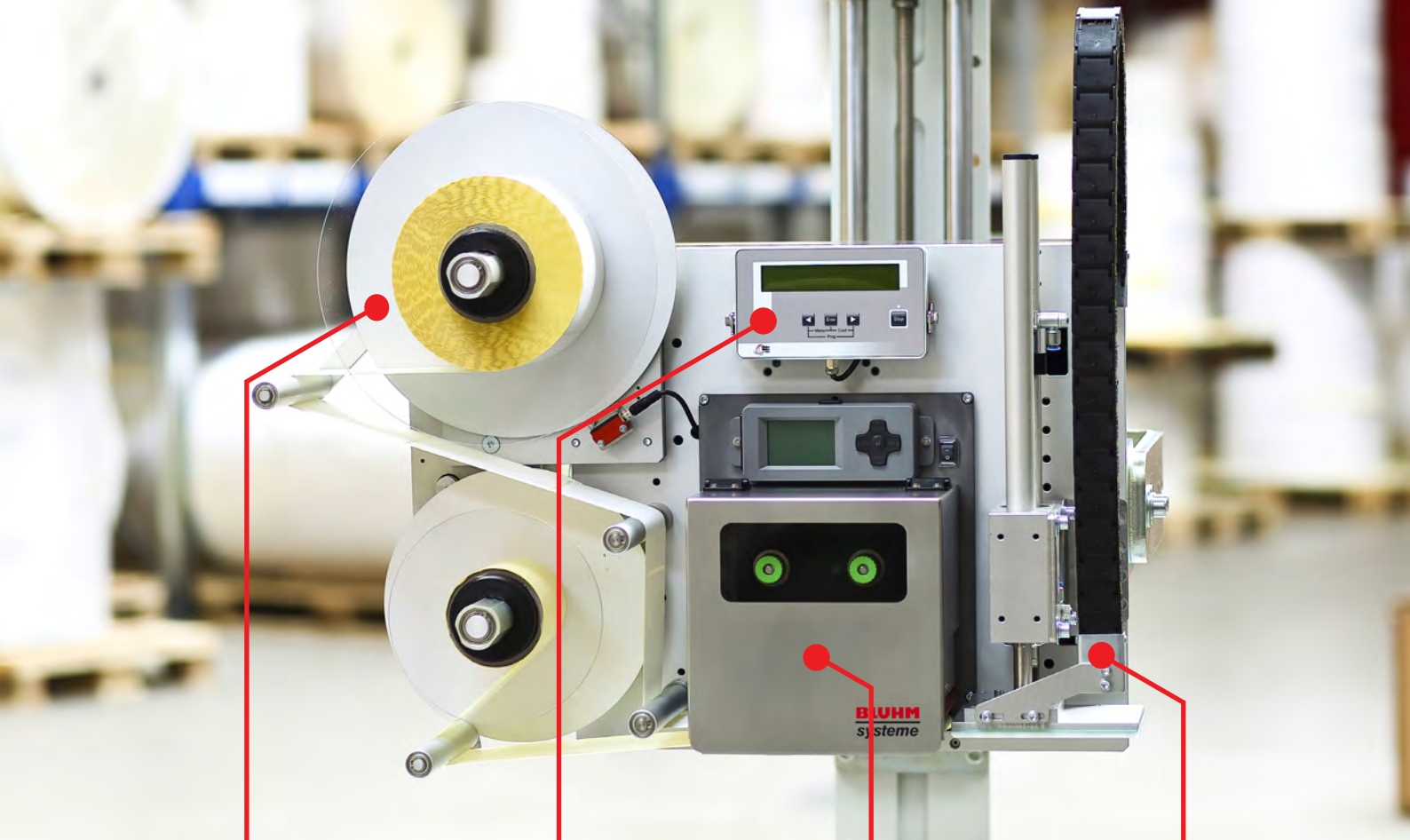
Print Engines from Zebra, Sato, Avery, and Datamax can be used. This guarantees adaptability to future printing requirements as well as flexibility in selecting printing equipment

Label Winder and Unwinder

The use of large spools for winders and unwinders minimizes setting up times and therefore interruption of production runs. Label rolls on spool diameters up to 430 mm and with 900 m of label liner ensure long continuous production periods. Tandem operation will ensure continuous production.

Controller

Industrial PCs and master controllers in combination with the WeberWare application software offer maximum flexibility for interfacing with existing equipment. Hardware periphery is seamlessly integrated via conventional standards such as Ethernet, Profibus, serial and parallel data connections and USB ports. Scanners, cameras and special sensors guarantee labelling reliability.



Label Winder and Unwinder



Motor driven large spool unwinder



Standard winder and unwinder

Controller



Master controller



Standard controller



Industrial PC

Printing modules



Datamax



CAB



Zebra



Sato



Avery

Tamp



90° swivel

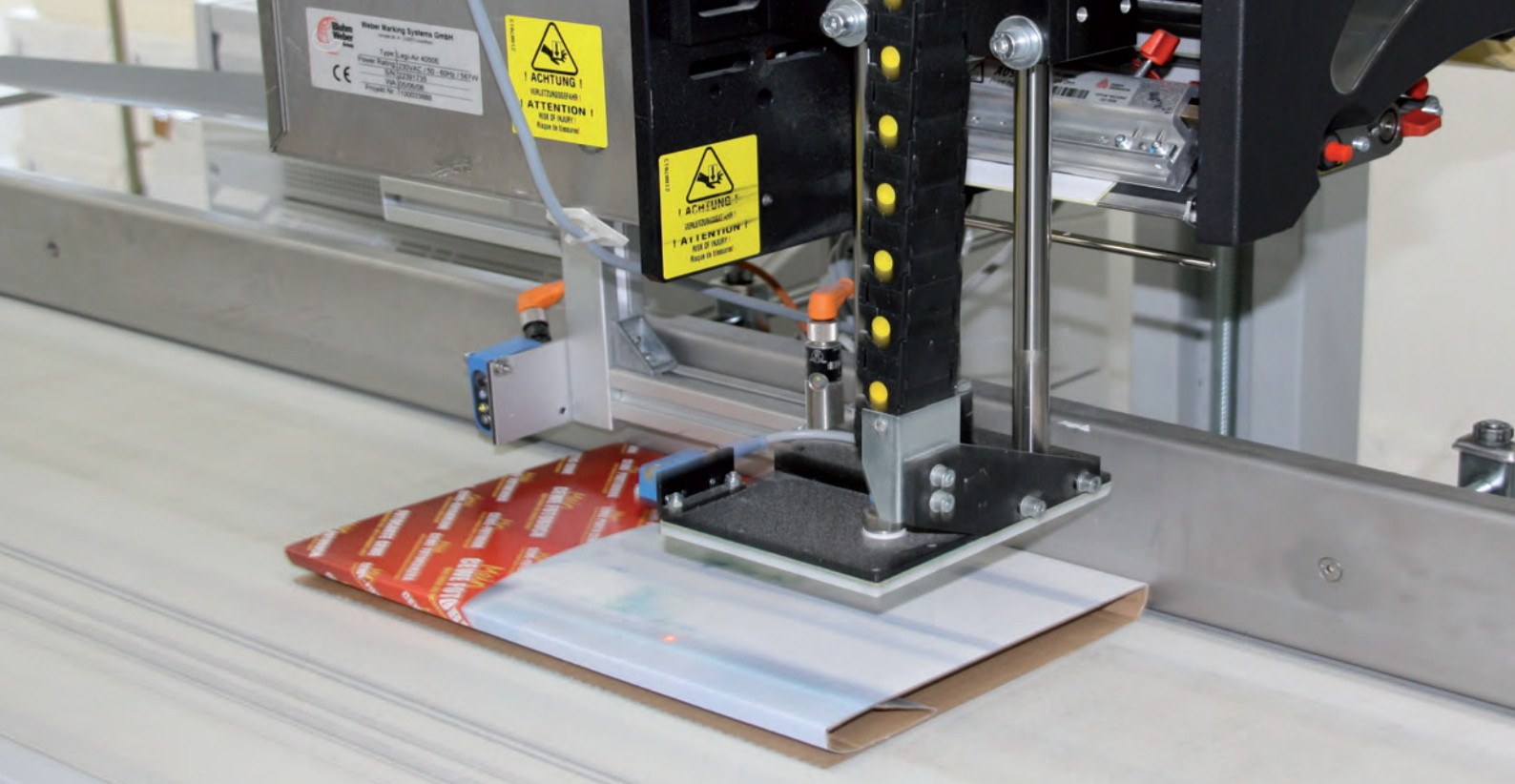


Blow-Box



Standard

Extended Stroke



Customised systems

Solutions tailored to meet your specific demands

Weber's flexible printer applicator systems are designed for simple integration into existing production lines. A wide variety of applications are realized reliably and at high dispensing speeds. Main features are simple operation, service-friendliness and compact design. Setting up times are reduced to a minimum as all consumables are quick and easy to replenish. In custom applications, the demands are thoroughly reviewed, together with the Research & Development Team. In combination with standard solutions, Weber can also offer specially manufactured solutions to labelling. Approximately 5000 labelling systems are successfully installed annually.

Enclosure to protect from extreme environments

Temperature controlled enclosures optimally protect the equipment from temperatures below or above system specifications. Enclosures with special protective seals also offer protection in rough production environments with high concentrations of dirt and dust.

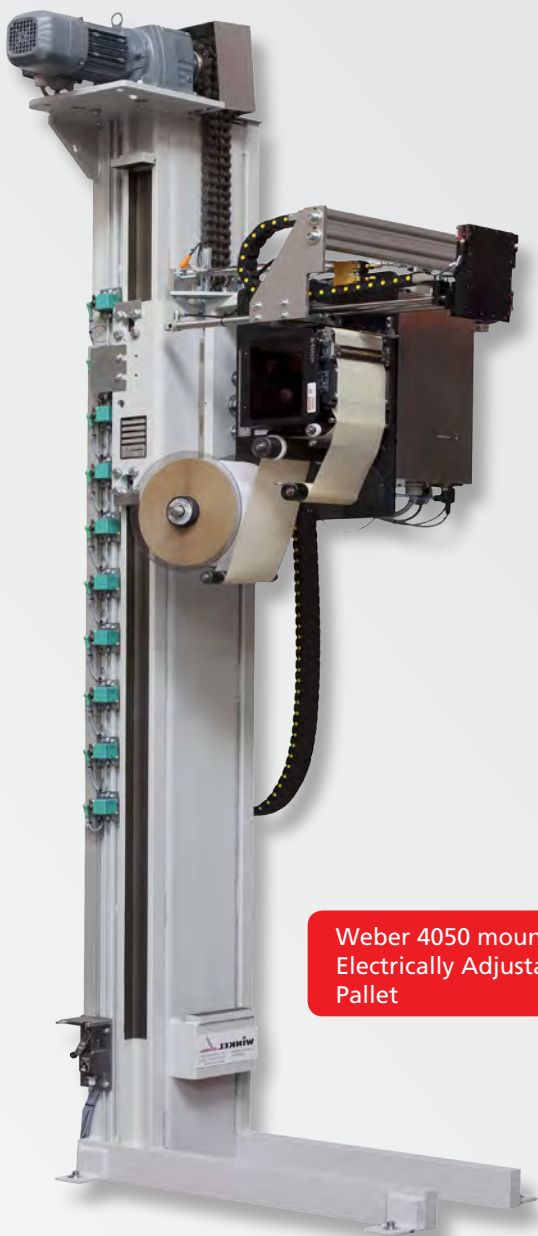
Precision Labelling

Optional precision guides can offer tolerances of ± 0.5 mm. This allows fast, reliable and accurate labelling of e.g. window profiles and printed circuit boards.

RFID - Radio Frequency Identification

RFID technology may be used to optimize logistics systems. An RFID printing module integrated with the label print dispensing systems supports all existing RFID standards. Faulty RFID labels will be rejected by a Bad Tag Reject Arm. Weber Packaging Solutions, as a member of the RFID/EPC implementation network of the GS1 Germany, is actively participating in the development of RFID application standards.





Weber 4050 mounted on
Electrically Adjustable Stand
Pallet



Legi-Air 4050 with enclosure
for dust protection



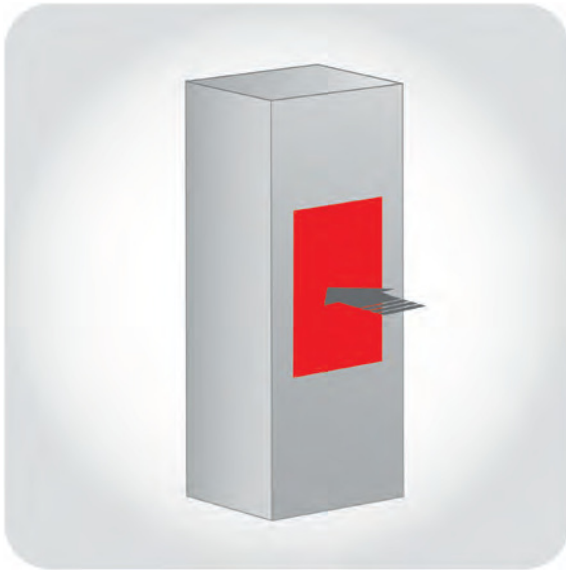
Pallet labeller in protective enclosure
with built-in heating system



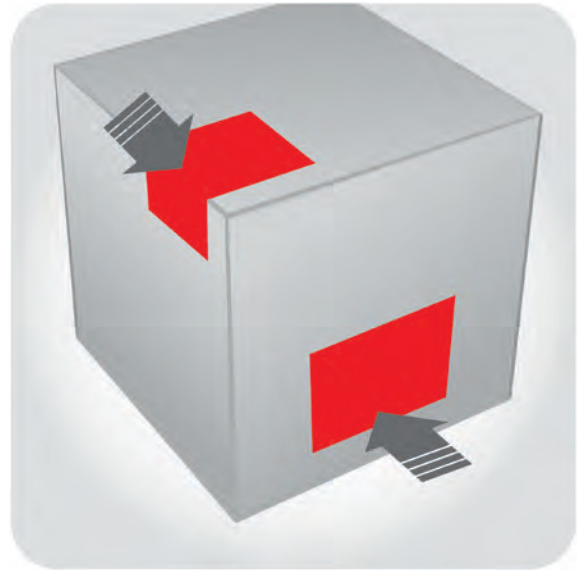
Legi-Air 4050 with conveyor and
post for spindle adjustment

Versatile labelling options

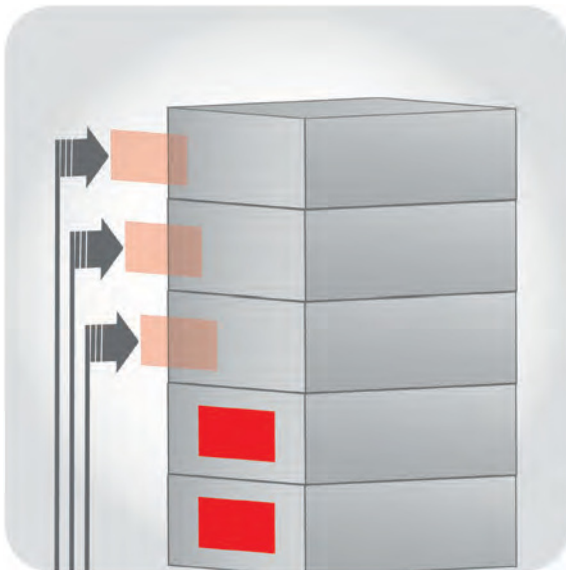
Side labelling



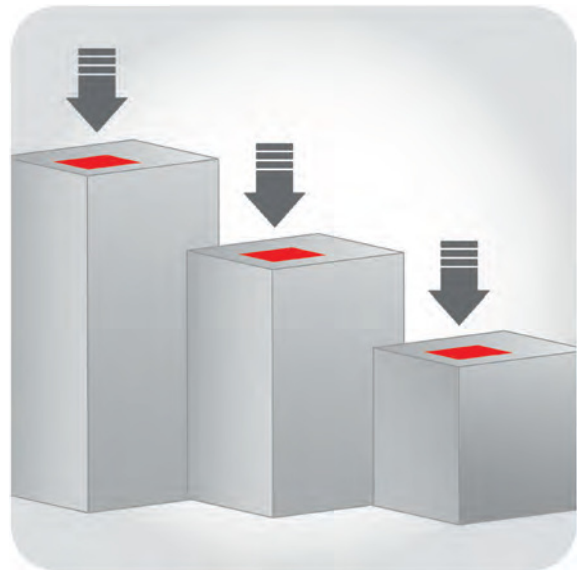
Labelling on all sides of the product



Freely selectable heights



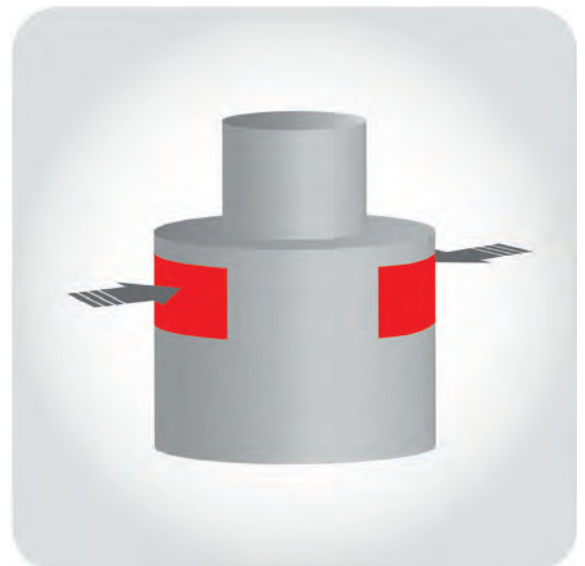
Varying product heights



Critical surfaces



Cylindrical products



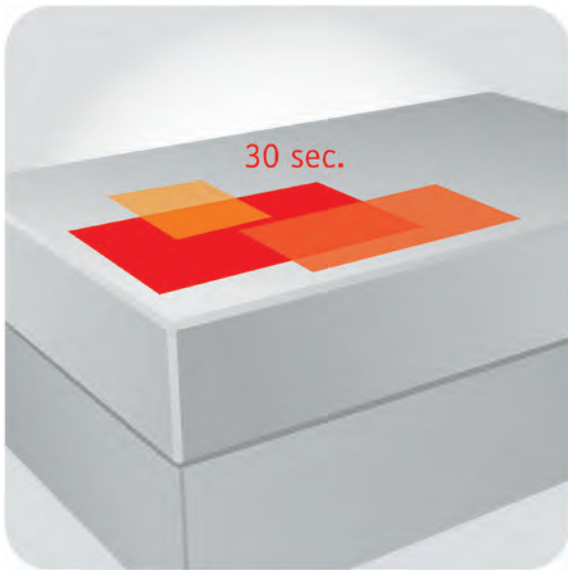
Labelling from the bottom



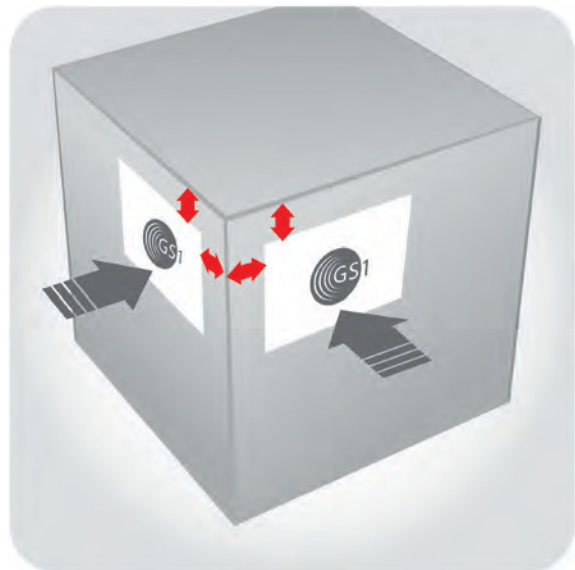
Maximum labelling clock speed



Multiple label formats



EAN 128 Pallet labels



Label reliability



Precision labelling





Quality “Made in Germany” By Weber

Powerful and versatile

Because they are so extremely powerful and versatile, Weber printer applicator systems have proven their reliability many times over in a diversity of industries. Premium label print quality and legibility, combined with fast and accurate application, is guaranteed. The robust construction of the label print dispenser and the use of industry-proven standard components guarantee reliable and lasting operation even in rough production environments.

Simple to service

The many functions such as service intervals or operating mode display are all user-friendly. These functions may report that a service is due via a signal or by e-mail to a specified e-mail address, or report malfunctions caused by running out of consumables. The plain text multi-language display may be freely positioned to be accessible to the operator, even in confined production spaces. The integrated web browser also allows inspection of the current service status via remote diagnostics.





Labels Production

Manufactured customized for you

Billions of self-adhesive labels are used as data or advertising in production, logistics and commerce. They serve to track or trace goods, optimize production flow or to provide the consumer with important information on a product. The requirements for the label change as the product changes. Whether a label serves as a routing barcode on a postal item or whether it is applied for identification of vehicle components, where it should remain in position and legible for the next 10 years, all of this makes a difference.

Whether blank labels for post-printing, labels with product information, brand labels with sophisticated graphic designs or RFID-capable labels: Weber offers a wide range of labels for any application. Our central materials store and the comprehensive range of printing dies will considerably reduce costs and effort. More than 100 different label materials are available in stock. Your best prospects of completing even your most pressing jobs in good time are through Weber Packaging Solutions

Thermal transfer ribbons



We offer you a wide selection of thermal transfer ribbons to ensure perfect printing of your labels and optimal durability. From the standard wax-based ribbon for paper labels via the wax-/resin-based premium ribbon for smudge-resistant labels up to resin-based super premium ribbon for smudge-, scratch- and oil-resistant PE labels or nameplates. Our team are on hand to test ribbon or substrate quality for your special applications. Please always bear in mind that using the correct ribbon will also extend the service life of your printers printhead

Weber Packaging Solutions UK & Ireland

Head office: Macmerry Industrial Estate, Tranent, East Lothian Scotland EH33 1HD

Telephone: +44 1875 611111 · Fax: +44 1875 613310 · sales@weber.co.uk · www.weber.co.uk

Weber Packaging Solutions Ireland: Kilcannon Industrial Estate, Old Dublin Road, Enniscorthy, Wexford

Telephone: +353 53 9233778 · Fax: +353 53 9233284 · sales@weberireland.com · www.webermarking.ie



Weber
PACKAGING SOLUTIONS