

Geset modular

Fully automatic labeling

Fast, reliable, economical



The right solution for every sector and every product shape

Labels make the product

Geset 100, 300 and 700 stand for a modular system.

Up to 50 modules are available for performance to satisfy customer demands.

High flexibility allows comprehensive standardization of modules, short planning and delivery times and therefore maximum economy, benefitting both the customer and his application.



Geset 100

Simple and flexible

Geset 100 is the solution to almost any labeling application in terms of both price and speed, offering you a correctly dimensioned and economic solution.



Geset 300

Complex, fast and flexible

The high-performance all-round and side labeling system processes up to 250 products per minute. Highly flexible, easy to modify and adjustable to suit many shapes and product sizes.

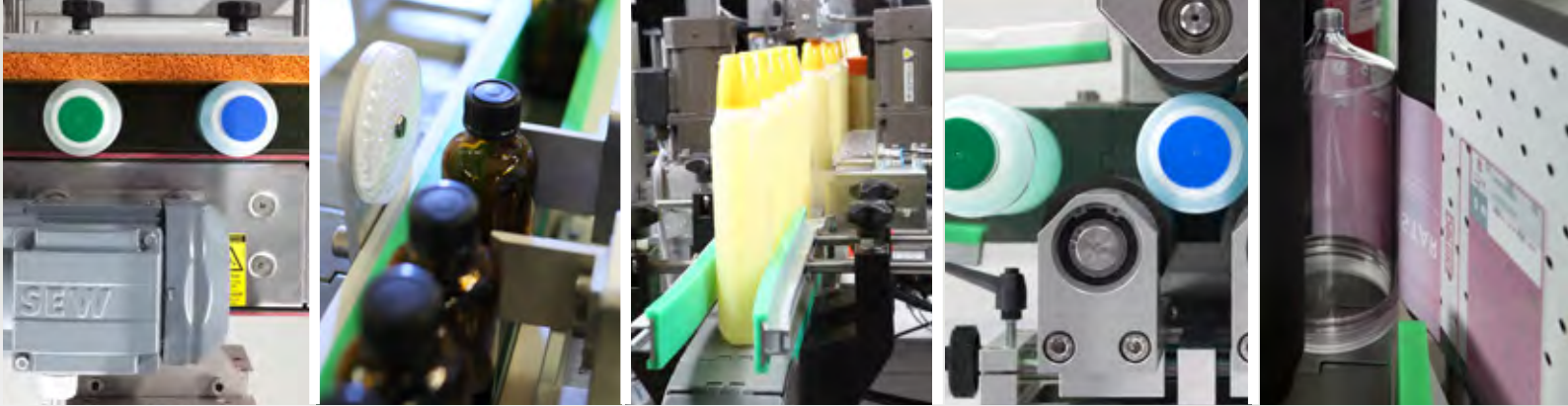


Geset 700

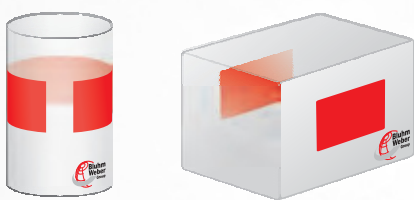
Individual, complex, fast and flexible

Labeling of any imaginable product shape and size; rectangular, oval, cylindrical, conical, on top, front, bottom and back – fully or partially; with or without safety closure.

May be individually combined with laser printers, thermal transfer direct printers and printing dispenser systems.



Labeling – Weber Packaging Solutions can label virtually any product. We are a strong partner supporting you with any imaginable dispensing system - as thousands of installed solutions testify. Regardless of your special labeling demands – just contact us for the optimal solution.





Geset 100

- Single items or small series
- Robust design
- Simple handling
- Mobile application
- Working range up to 500 x 700 mm

Simple and flexible

Each application and requirement demands a solution concept that is both technically optimal and economically justifiable.

The development of the Geset 100 brought us considerably closer to meeting this customer demand. Labeling small series or low volumes can be as accurate and flexible as labeling in a large plant. Its robust construction renders it ideal for both intermittent use of only a few minutes per day or for multiple shift operations.

The Geset 100 may be integrated into existing production processes or operate as a manually charged stand-alone solution.

Perfect and accurate processing of all standard packaging shapes.

The Geset 100 series builds on the proven Alpha-Compact as the dispensing module.





At the core: the Alpha Compact dispenser, proven in thousands of applications.



All-round labeling possible in throughput mode, without stopping the product.





Geset 300

- Closed IP54 stainless steel frame
- Fast product change thanks to up to 50 stored parameter sets
- Central speed adjustment
- Accurate repeat labeling based on position sensing system
- Flush lateral basic and wrap belt to reach all labeling positions

More flexibility

The basic concept of this system is based on two-sided labeling of molded bottles without the use of runaround text blocks.

The main advantages here are low set-up costs, high availability and multiple use in different production lines. Adjustment to suit specific products is made by simple adjustment of the machine components. The alignment and therefore highly accurate positioning of the labels is based on transport parameters.

A broad production range may be covered based on processing up to 250 mm high label formats at clock frequencies up to 250 items/min.





Modular structure assures maximum flexibility in every respect.



Pharmaceutically suitable, easy to clean and meeting top demands on hygiene.



Flexible system design to meet your special needs

Good right from the start: The solid Geset 300 chassis in various basic stainless steel versions, also with integrated control cabinet, has a warp resistant and open design.

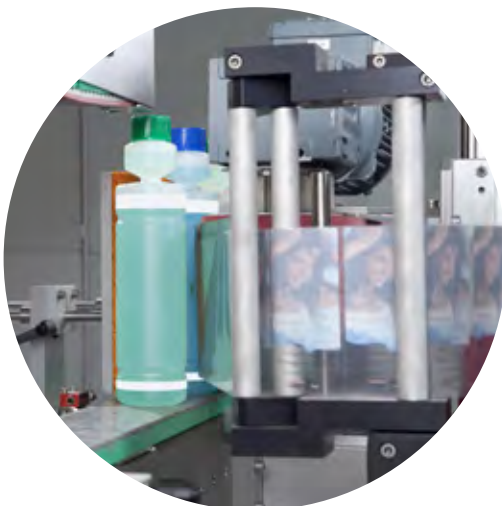
Geset 300 for a variety of product sizes and weights, dimensioned to suit. All modules and installation groups are easily accessible: a clear user advantage in terms of maintenance, service, cleaning and change-over to other products of different shape.



1

Alignment

The product shape determines the module to align the specific product with. Accurate product alignment significantly affects labeling accuracy.



2

Singling

Different modules are available depending on plant output. All modules are designed to allow fast change-over to other products and product sizes without the use of tools.





5

Rotating

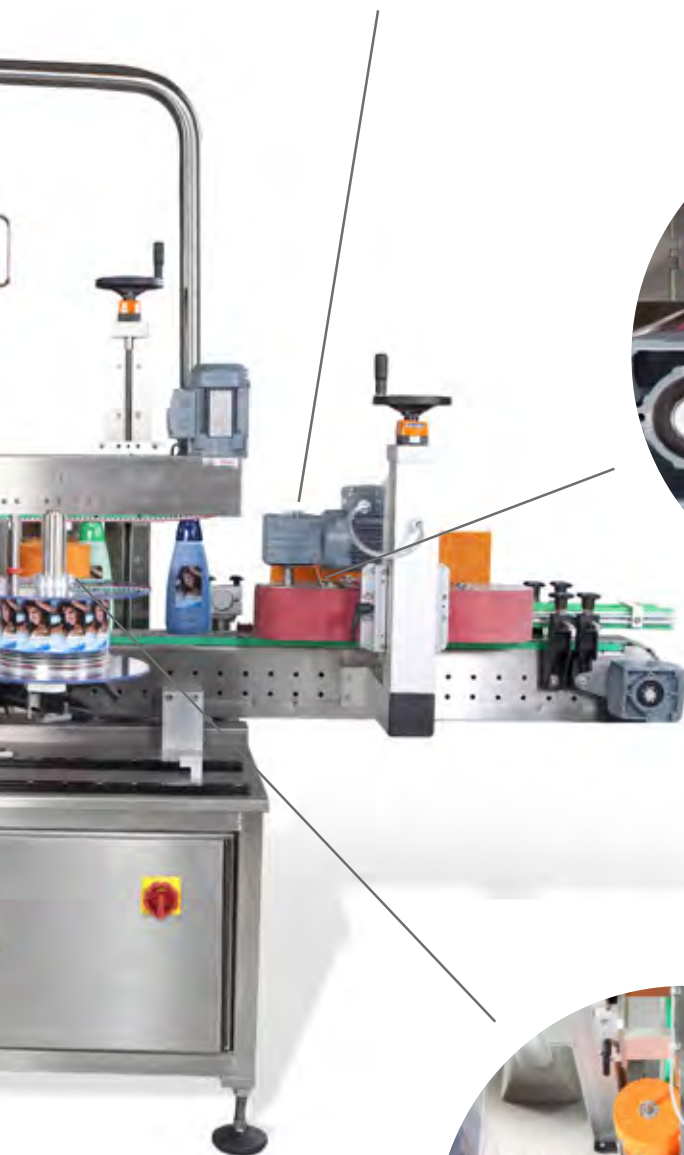
with the triple-roller unit. Extremely large, even imprecise, light and heavy circular containers accept the label without spiral effects. The label is positioned and aligned particularly accurately.



4

Winding

with winding modules. This system version rotates the object to be labeled whilst passing through, in the process accepting the label.



3

Double-sided

labeling also from top, bottom, right and left.



Geset 700

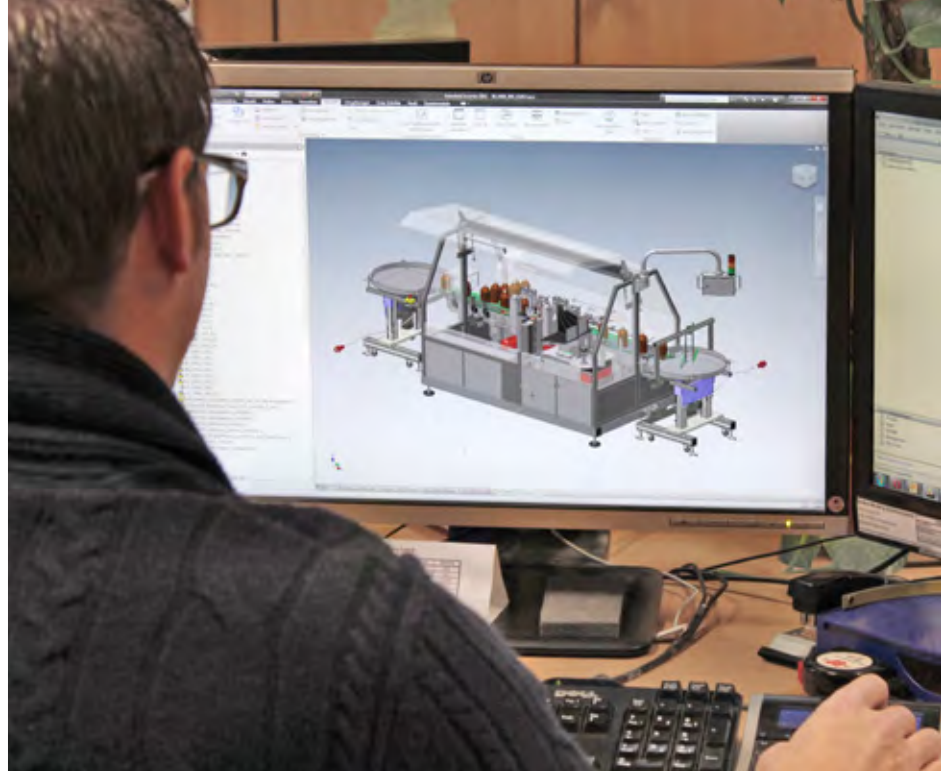
- Single / large and small series
- Robust design
- Simple handling
- Mobile application
- Special solutions

Individual solutions

Individual labeling to meet existing requirements and demands..

Geset 700 is synonymous with individual customized labeling solutions. It is irrelevant here whether a machine is designed and developed for the cosmetics or pharmaceutical standard or special products industries or to meet existing guidelines. Systems are being developed also for individual labeling in the foodstuffs industry. Technical components for the automobile industry demand special designs and know-how.





Checking and documenting work processes

Individual working and labeling steps must be checked, verified and documented to ensure process reliability. Defective products must be reliably singled out.

The Geset 700 range offers the process technology required for these tasks as well.



Complementing with individual printing

"Best before" data, lot or batch numbers, one- and two-dimensional barcodes, article designation.

The comprehensive Weber Packaging Solutions portfolio allows individual and constantly changing per label printing.

Even in aggressive and abrasive environments, lasers offer maximum functional reliability and tamper-proof printing also enabling supplementary information to be printed on the label later.

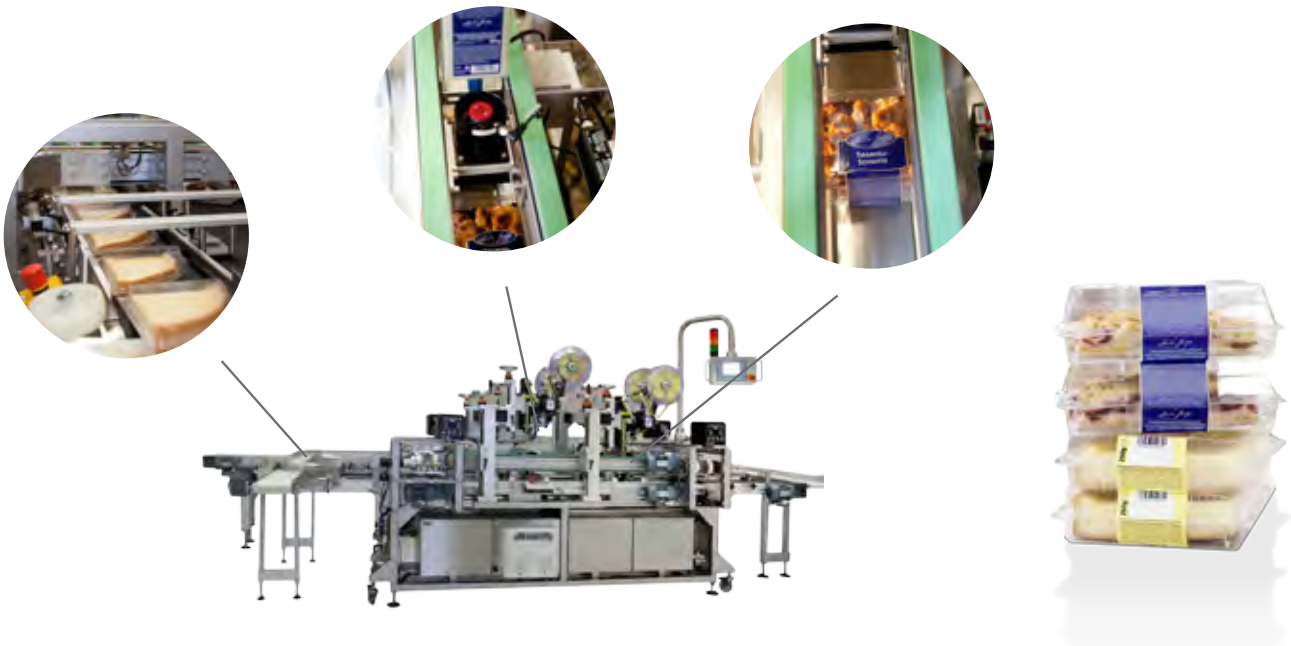
Thermal and thermal transfer direct printers for 1:1 printing enable inexpensive and accurate supplementary or complete printing on all label surfaces.

Ink printing for printing of information fast and conveniently, based on CIJ and TIJ (Continuous Inkjet and Thermal Inkjet) technology allows maintenance-free printing at up to 600 dpi resolution.



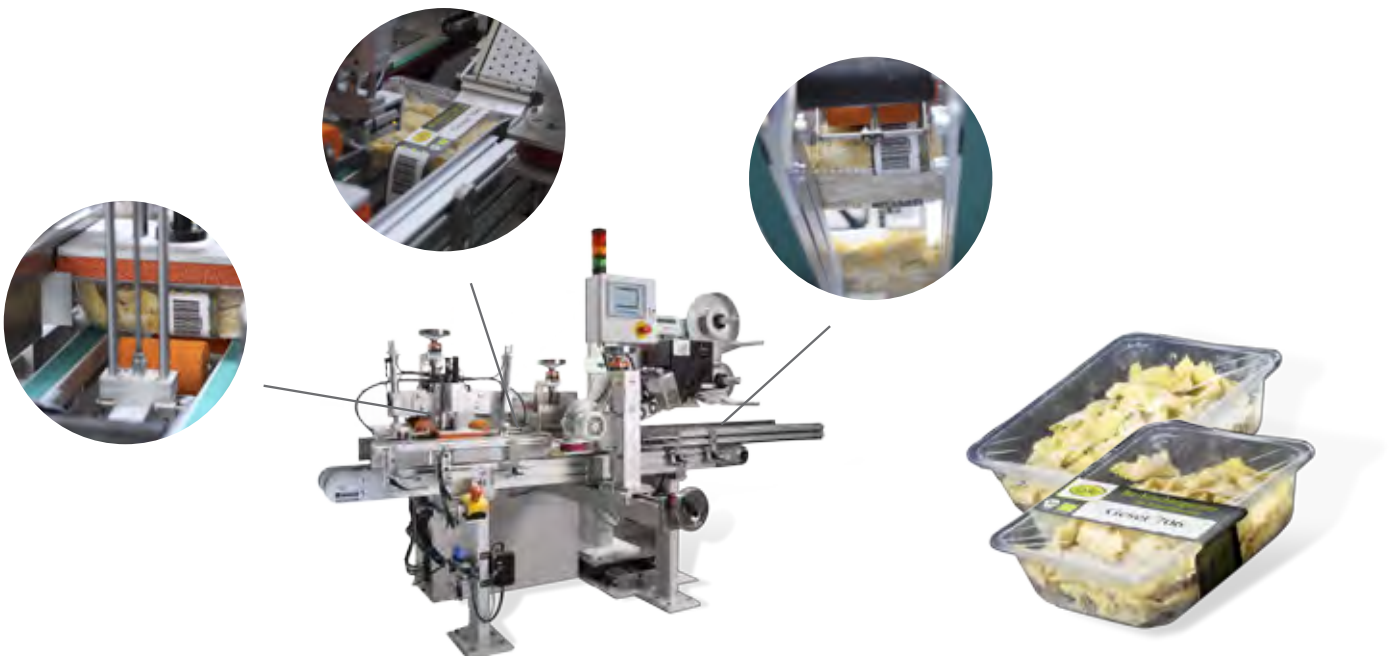
Labeling cake packaging

Cheese or fruit tart cuts are tricky to package but they are delicious. This means that the label should enhance the content, to ensure that the product sells well straight from the cooling rack. A special machine has been designed for this application. Up to 85 delicious cream cakes are taken over by the packaging unit per minute, to be quickly and reliably wrapped in a label. Apart from promoting sales, the label also ensures reliable sealing and displays the lot number and best before date.



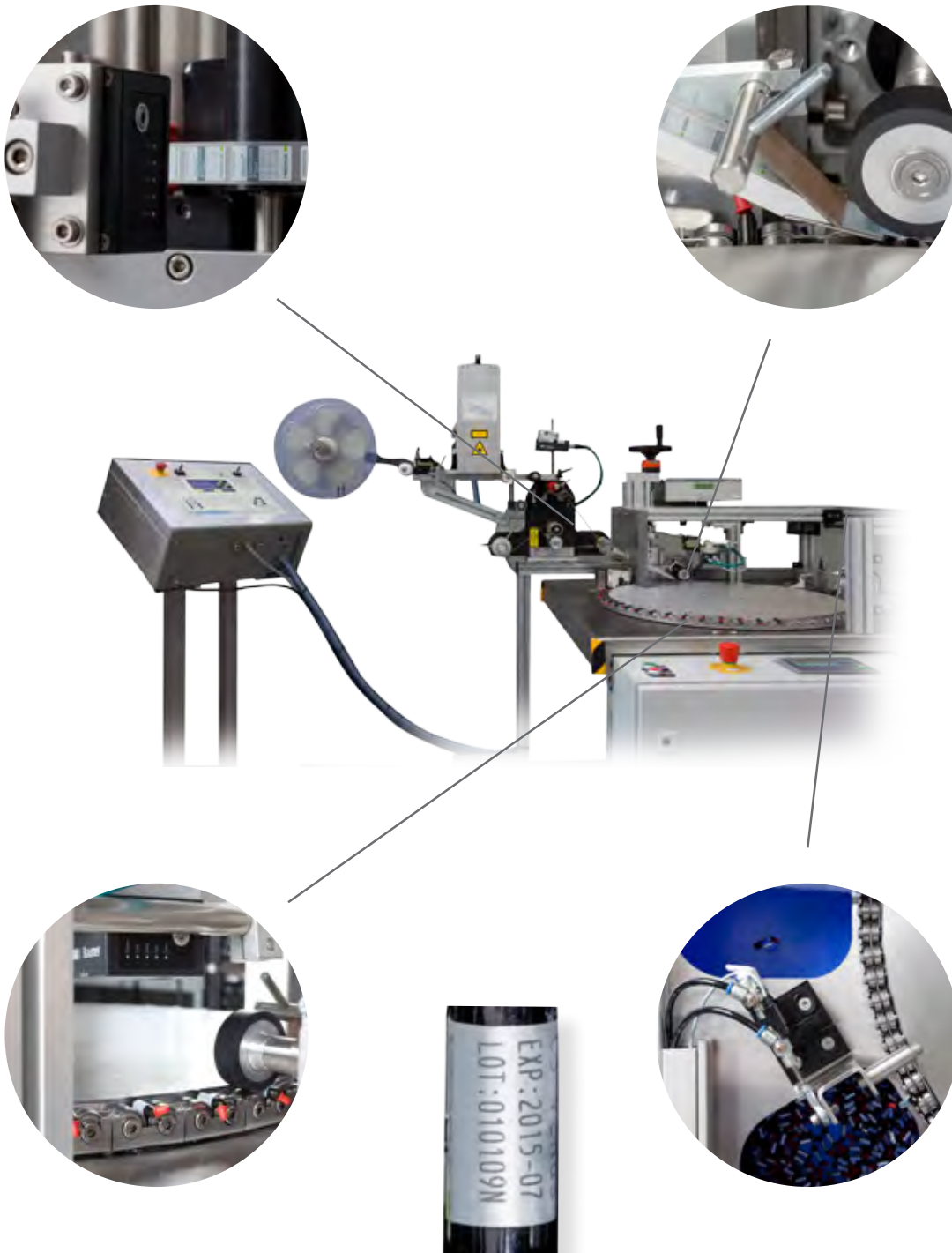
All-round labeling of pasta dishes

Pasta – a favorite with young and old. Always fresh and irresistible. The Geset 700 was equipped with an individual printing mechanism to accommodate the many types. Small, large and varying quantities in quick succession - allowing the specialized manufacturer to quickly meet market and customer demands. The right labeling technology ensures success!



Special labeling of small pharmaceutical ampoules

Small ampoules must be labeled in high volumes – fast, accurately and with the correct data. A high speed laser ensures that the printed data on the label is correct; a rotation labeling machine delivers the required high processing speed. Camera system technology monitors and verifies the entire text printing process and accuracy of labeling. Products outside the specified tolerances are singled out.





- Identifying the AS IS factors
- Identifying the process parameters
- Determining the productivity
- Definition and coordination
- System design
- Manufacture and pre-acceptance
- Installation and commissioning
- After Sales Service

Project management

with experience and know-how. Our Project management, supported by distribution and consulting engineers, assures perfect execution and implementation – from the concept, via system planning and design, up to manufacture, assembly, installation and acceptance.





Weber Marking Systems by your side

Weber Marking Systems GmbH is the headquarter of the European subsidiaries and was founded in 1980. As a company being experienced in developing, producing and selling highly efficient labelling and coding systems for industrial marking, Weber Marking Systems provides its products to all branches.

Sales includes labelling and coding systems, software as well as a world-wide company network for direct selling, service and technical support. In Germany we have a great labels production for custom and stock labels. Technical expertise and service-oriented all-round – Weber Marking Systems offers a complete distribution and service network in Europe, offering systems characterized by full service competency.

On top of the market:

With a staff contingent of more than 450, Weber Marking Systems has a direct presence in the European market – 90 system consultants and service technicians offer customer support on a daily basis – 18 service centres, each with their own spare parts depots, ensure constant availability. We are a phone call away!

Maintenance contracts:

Our maintenance contracts increase the service life and availability of your systems, preventing production downtimes. The contract includes regular professional maintenance, ensures quick service response and offers cost advantages in terms of provision of spare parts and loan equipment.

Hotline service:

We offer direct support and, if necessary, refer you to our service technicians in the shortest possible time. Possible downtimes are thus reduced to a minimum.

Training/system training:

The individual training courses prepare you for optimal application of the labelling systems. All the significant aspects are explained directly on the system in question. We offer basic and advanced training courses for system operators and technical staff.

WEBER PACKAGING SOLUTIONS:

Macmerry Industrial Estate, Tranent,
East Lothian. EH33 1HD
Tel: 01875 611 111
Fax: 01875 613 310
sales@weber.co.uk
www.weber.co.uk

WEBER PACKAGING SOLUTIONS:

Kilcannon Ind. Est., Old Dublin Road,
Enniscorthy, County Wexford, Ireland
Tel: 053 92 33778
Fax: 053 92 33284
sales@weberireland.com
www.webermarking.ie



Weber
PACKAGING SOLUTIONS